

GALLERY IV IRIDESCENCE A CELEBRATION

OBJECT GUIDE

1) *Left to right:*

Vase, c. 1897

Blown glass
Tiffany Glass and
Decorating Company,
New York City,
1892–1900
Marks: *o4093*
(54-092)



Vase, c. third century

Blown glass
Maker unknown, Roman
(66-061)

Trivet, c. 1900

Butterfly design
Glass, bronze
Tiffany Glass and Decorating
Company, New York City,
1892–1900
Marks: *TIFFANY STUDIOS /
NEW YORK / [conjoined
TGDco] / 1487*
Gift of the Laubengeiger Family
(2012-030)

Bowl, c. first century

Glass
Maker unknown, Roman
Gift of Mr. and
Mrs. William Doelger
(GL-016-85)

Vase, c. 1899

Blown glass
Tiffany Glass and
Decorating Company,
New York City,
1892–1900
Marks: *L.C.T. / N 9857*
(54-013)



Bowl, c. second century

Blown glass
Maker unknown, Roman or Syrian
(GL-060-79)

Vase, c. 1925

Blown glass
A. Douglas Nash Company, Corona,
Queens, New York, c. 1920–28
Marks: *NASH 549*
(GL-031-68)

Claret glass, c. 1898

Victoria pattern
Blown glass
Tiffany Glass and
Decorating Company,
New York City,
1892–1900
Marks: *L.C.T. / L 1802*
(56-034)



Vase, c. 1897
Blown glass
Tiffany Glass and
Decorating Company,
New York City,
1892–1900
Marks: *o4493*
Paper label: *Given to Charlie by
Louis. C. Tiffany*
(56-041)



2) *Left to right:*

Vase, c. 1900
Glazed clay
Maker unknown,
Austrian
Marks: *I / 5*
(PO-006-64)



Tile, c. 1902
Molded glass
Tiffany Studios, New York City,
1902–32
(56-055:3)

Vase, c. 1900
Blown glass
Tiffany Glass and
Decorating Company,
New York City,
1892–1900
Marks: *o10515 /
Louis C. Tiffany*
(54-001)



Vase, c. 1905
Blue Heliotrope décor
Elizabeth Morse Genius
wedding gift
Glass, silver
Glasfabrik Johann Loetz Witwe,
Klostermühle, Bohemia (now
Czech Republic), 1836–1947
(GL-074-93)

Vase, c. 1905
Lava
Blown glass
Tiffany Studios, New York City,
1902–32
Marks: *2328 C /
Louis C. Tiffany – / Favrite*
(64-006)

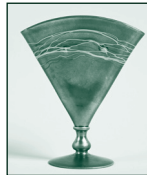
3) *Left to right:*

Vase, c. 1899
Blown glass
Tiffany Glass and
Decorating Company,
New York City,
1892–1900
Marks: *L. C. T. / H1810*
(79-530)



Vase, c. 1920
Aurene
Blown glass
Steuben Glass Works, Corning,
New York, 1903–2011
Designer: Frederick Carder,
British-American, 1863–1963
(56-008)

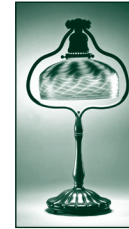
Vase, c. 1920
Shape No. 6297,
Aurene
Blown glass
Steuben Glass Works,
Corning, New York,
1903–2011
Designer: Frederick Carder,
British-American, 1863–1963
Marks: *Stueben aurene 6297*
(U-081)



4) **Plate, c. 1900**
Blown glass
Tiffany Glass and Decorating
Company, New York City,
1892–1900
Marks: *o10128*
(78-0008)

5) *Left to right:*

Bell lamp, c. 1910
No. 424, Wave design,
dome shape
Blown glass, bronze
Tiffany Studios, New
York City, 1902–32
Marks, base: *7907 /
TIFFANY STUDIOS /
NEW YORK*
(70-009)



Vase, c. 1904
Formosa décor
Blown glass
Glasfabrik Johann Loetz Witwe,
Klostermühle, Bohemia (now
Czech Republic), 1836–1947
Gift of Mr. and Mrs. James L.
Goodwin
(GL-066-20)

Vase, c. 1900
Blown glass
Tiffany Glass and Decorating
Company, New York City,
1892–1900
Marks: *Louis C. Tiffany R 4017*
(57-005)

Vase, c. 1895
Karthago line
Glazed clay, glass
Tonwarenfabrik
Robert Hanke,
Ladowitz, Bohemia
(now Czech Republic), 1882–1945
Marks: [illegible]
Gift of John H. Proctor
(PO-017-86)



Tile, c. 1902
Molded glass
Tiffany Studios, New York City,
1902–32
(56-055:13)

Tile, c. 1902
Molded glass
Tiffany Studios, New York City,
1902–32
Marks: *PATENT APPLIED FOR*
(56-055:12)

Vase, c. 1895
Karthago line
Glazed clay
Tonwarenfabrik
Robert Hanke,
Ladowitz, Bohemia
(now Czech
Republic), 1882–1945
Marks: [crown] / [Robert Hanke
trademark] / *KARTHAGO /
Made in Austria*
Gift of John H. Proctor
(PO-018-86)



Vase, c. 1904
Wellenoptisch décor
Blown glass
Glasfabrik Johann Loetz Witwe,
Klostermühle, Bohemia (now
Czech Republic), 1836–1947
(1998-009)

6) *Left to right:*

Vase, c. 1904
Shape No. 2683, Aurene
Blown glass
Steuben Glass Works,
Corning,
New York, 1903–2011
Marks: *STEBEN AURENE*
[illegible]
(GL-052-79)



Vase, c. 1899
Ciséle décor
Blown glass
Glasfabrik Johann Loetz Witwe,
Klostermühle, Bohemia (now
Czech Republic), 1836–1947
(GL-029-79)

Vase, c. 1898

Candia Papillon décor
Blown glass, brass
Glasfabrik Johann Loetz Witwe,
Klostermühle, Bohemia (now
Czech Republic), 1836–1947
Marks, base: 1883
Gift of M. Elizabeth Brothers
in memory of Hugh and
Jeannette McKean
(2017-119)

Vase, c. 1910

Louis Comfort Tiffany's
Laurelton Hall,
Long Island, New York
Aventurine Lava
Blown glass
Tiffany Studios,
New York City, 1902–32
Marks: *L. C. Tiffany Favrite 13A-Coll*
(2018-023:1)



Vase, c. 1900

Astraea décor
Blown glass
Glasfabrik Johann Loetz Witwe,
Klostermühle, Bohemia (now
Czech Republic), 1836–1947
(GL-017-83)

Vase, c. 1905

Blown glass, silver
Quezal Art Glass &
Decorating Company,
Maspeth, Queens,
New York, 1901–25
Maker, base: Herbst &
Wassall, Newark,
New Jersey, c. 1903–31
Marks, base: *X4460 / STERLING /*
[star and wing]
Inscriptions: *1854-1904 /*
[illegible monogram]
(GL-056-51)



Vase, c. 1905

Blown glass
Tiffany Studios, New
York City, 1902–32
Marks: *L. C. T. / Y6384*
(54-066)



7) Turtleback panel, c. 1902

Molded glass, lead
Tiffany Studios, New York City,
1902–32
(64-024)

8) Left to right:

Vase, c. 1900

Silberiris II décor
Blown glass
Glasfabrik Johann Loetz
Witwe, Klostermühle,
Bohemia (now Czech
Republic), 1836–1947
(GL-054-58)



Vase, c. 1905

Blown glass, silver
Quezal Art Glass & Decorating
Company, Maspeth, Queens,
New York, 1901–25
Maker, silver mount: Alvin Silver
Manufacturing Company, Sag
Harbor, New York, 1886–1928
Marks: *Quezal*
(GL-049-69)

Pen-and-ink stand, c. 1910

Molded glass, blown glass,
silver-plated bronze
Tiffany Studios, New York City,
1902–32
Marks: *TIFFANY STUDIOS /*
NEW YORK / 10388 / TIFFANY
STUDIOS / NEW YORK / 3664 /
L. C. T.
(53-006)

Vase, c. 1895

Swimming fish and crustaceans
Glazed clay
Manufacture Clément Massier,
Golfe-Juan, Alpes Maritimes, France,
1883–1900
Designer: Clément Massier, French,
1845–1917
Marks: *Clement Massier / Golfe-*
Juan . / (. A . M. / CLEMENT /
GOLFE JUAN / (A.M.)
(PO-020-70)

Vase, 1898

Goldstone and Tiger Eye glaze
Glazed red clay
Rookwood Pottery, Cincinnati,
Ohio, 1880–1967
Decorator: Artus Van Briggie,
American, 1869–1904
Designer: William Watts Taylor,
American, 1847–1913
Marks: [conjoined *RP* surmounted
by flames] / *7 4 5 B* / [conjoined
AVB]
(PO-015-94)

Vase, c. 1899

Blown glass
Tiffany Glass and
Decorating Company,
New York City,
1892–1900
Marks: *H 1727 / L. C. T.*
(57-002)



Vase, c. 1920

LaSa line
Glazed clay
S. A. Weller Pottery, Zanesville, Ohio,
1872–1949
Decorator: John Lessell,
German-American, 1871–1926
Marks, side: *Weller-Lasa*
(PO-009-77)

9) Left to right:

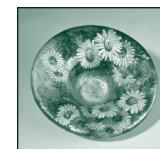
Decanter, c. 1896

Glass, silver, pearl,
diamond, garnet, sapphire
Tiffany Glass and
Decorating Company,
New York City,
1892–1900
Maker, mount:
Unknown, probably German
Marks: *L. C. T. D 689*
Paper label: *TIFFANY FAVRILE*
GLASS REGISTERED TRADE
MARK / [conjoined TGDco]
(66-010)



Bowl, c. 1930

Enamel on copper
Camille Fauré,
French, 1874–1956
Marks: *C. FAURE*
Limoges / FRANCE
Gift of Harry C. Sigman
(2014-016:18)



Vase, c. 1925

Lustre Glaze line
Blown glass
Imperial Glass Company, Bellaire,
Ohio, 1901–31
Marks: [IMPERIAL conjoined *II*]
(GL-026-71)

Vase, c. 1905

Sicardo line
Glazed clay
S.A. Weller Pottery, Zanesville,
Ohio, 1872–1949
Decorator: Jacques Sicard, French,
1865–1923
Marks: *SICARD WELLER*
(PO-005-66)

Vase, c. 1903–10

Glazed white clay
Pewabic Pottery, Detroit, 1903–61,
1968–present
Marks: [*PEWABIC DETROIT*
circle logo]
(PO-022-71)

Vase, c. 1902–7

Sicardo line
Glazed clay
S.A. Weller Pottery,
Zanesville, Ohio,
1872–1949
Decorator: Jacques Sicard, French,
1865–1923
Marks on base: 29
Marks on side: *WELLER /*
SICARD
(PO-047-69)



Tiles, c. 1902

Molded glass
Tiffany Studios, New York City,
1902–32
(82-011, 82-012)

Fruit bowl, c. 1910

Peacock at the Fountain pattern
Pressed glass
Harry Northwood and Company,
Wheeling, West Virginia, 1901–25
Marks: [*N* inside a circle]
(2017-120)

10) Vase, c. 1911

Pansy
Blown glass
Tiffany Studios, New
York City, 1902–32
Marks: *3918G L.C.*
Tiffany – Favrile
(54-026)



THE CHARLES HOSMER
MORSE MUSEUM
of American Art

445 NORTH PARK AVENUE, WINTER PARK, FLORIDA 32789
407-645-5311 MORSEMUSEUM.ORG