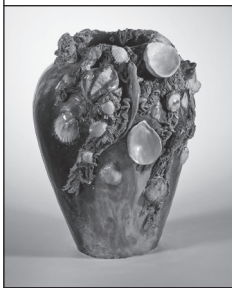


GALLERY XIV AMERICAN ART POTTERY

OBJECT GUIDE

FROM THE 1870S TO WORLD WAR I, American designers focused their talents on producing pottery that rivaled any contemporaneous pottery in the world in beauty, quality, and variety.



The work of America's art potteries became the first truly American original art to find widespread success both in the United States

and on the international stage.

In the decades following the Civil War, interest in art pottery grew out of the popularity of decorating china with painted designs—a pastime dominated by women. Beginning roughly with the Philadelphia Centennial Exhibition of 1876, the demand for china—referred to by contemporary writers as “the ceramics craze” or “china mania”—expanded to include art pottery as an essential element of interior decoration. The industry flourished until World War I but continued even into the 1950s. All the while, American women played a very

prominent role.

At its height, American art pottery enjoyed production centers in virtually every region of the country although if it had a capital, one would have to say it was in the Ohio River Valley, where the clay was right and conditions were encouraging. In the Midwest, Maria Longworth Nichols (1849–1932), a onetime amateur china painter from a wealthy family, founded Rookwood Pottery in Cincinnati, but New England (Grueby), the Middle Atlantic (Fulper), and the South (Newcomb) all became sites of important potteries.

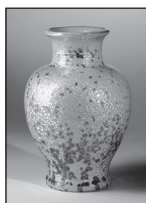
This gallery is devoted to the superb art pottery produced by American companies now well-known among historians, collectors, and connoisseurs of ceramics.

Above: VASE, c. 1880–82. Glazed white clay, T.J. Wheatley & Company, Cincinnati, 1880–82 (PO-090-94).

1) **Vase**, c. 1880–82
Glazed white clay
T.J. Wheatley & Company, Cincinnati,
1880–82
(PO-090-94)

2) **Vase**, c. 1915–early 1920s
Glazed clay
Fulper Pottery Company, Flemington,
New Jersey, 1805–1935
Marks: [FULPER]
(PO-039-69)

3) **Vase**, c. 1909–20
No. 526
Glazed stoneware
Fulper Pottery Company,
Flemington, New Jersey,
1805–1935
Marks: [FULPER]
(PO-065-87)



4) *Clockwise from top:*

Vase, 1936
Glazed white clay
The Pisgah Forest Pottery, Arden,
North Carolina, 1926–present
Decorator: Walter Benjamin Stephen,
d. 1961
Marks: *Pisgah ForEst* / [potter-at-
kickwheel logo] / 1936 / *W B Stephen*
(PO-011-84)

Vase, c. 1900–3
Losanti ware
Glazed porcelain
Mary Louise McLaughlin, 1847–1939,
Cincinnati
Marks: [conjoined *MCL*] / *CO* / 70
(PO-021-84)

Vase, 1921
Glazed porcelain
Robineau Pottery, Syracuse, New York,
c. 1904–29
Adelaide Alsop Robineau, 1865–1929
Marks: [conjoined *AR*] / 17 / 1921
(PO-052-85)

5) **Pitcher**, c. 1898–1900
Glazed red clay
Biloxi Art Pottery, Biloxi,
Mississippi, c. 1882–1910
George E. Ohr,
1857–1918
Marks: *G E Ohr*
(PO-018-75)



6) **Vase**, c. 1897–1907
Glazed stoneware
Grueby Pottery, Boston, 1897–1913
Marks: [GRUEBY POTTERY] /
BOSTON. U.S.A. / *I*
Paper label: *GRUEBY POTTERY* /
BOSTON U.S.A. / REGISTERED /
TRADEMARK / [floral logo]
(PO-072-66)

7) **Vase**, 1905
Glazed stoneware
Grueby Pottery, Boston, 1897–1913
Decorator: Ruth Erickson, active at
Grueby, c. 1899–1910
Marks: *GRUEBY POTTERY* /
BOSTON U.S.A. / [floral logo] /
[conjoined *RE*] / 98 / 11 / 05
(PO-009-66)

8) **Vase**, 1907
Glazed white clay
Rookwood Pottery, Cincinnati,
1880–1967
Decorator: Charles (Carl) Schmidt,
1875–1959
Marks: [conjoined *RP* surmounted
by flames] / *VII* / 787 *B* / *W* /
[conjoined *CS*]
(PO-057-66)

9) **Vase**, 1879
Glazed yellow clay
Thomas J. Wheatley,
1853–1917
Marks: *T.J. Wheatley* / 1879 /
[logos]
(PO-005-70)



10) **Vase**, c. 1902
Glazed white clay
Newcomb College Pottery,
New Orleans, 1895–1940
Potter: Joseph Fortune Meyer, 1848–1941
Decorator: Marie Medora Ross,
active at Newcomb, 1896–1906
Marks: [conjoined *NC*] / [conjoined *MR*] /
U / [conjoined *JM*] / *Q 9*
(PO-093-81)

11) *Left to right:*

Vase, 1880
Glazed yellow clay
T.J. Wheatley & Company, Cincinnati,
1880–82
Marks: *T.J.W. & Co/ Pat Sep 28 / 1880*
(PO-001-72)

Vase, c. 1906
Glazed buff clay
Newcomb College Pottery,
New Orleans, 1895–1940
Potter: Joseph Fortune Meyer, 1848–1941
Decorator: Leona Fisher Nicholson,
1875–1966
Marks: [conjoined *NC*] /
[conjoined *LN*] /
[conjoined *JM*] / *AV94* / *Q*
(PO-027-70)

Vase, c. 1906–8
Glazed tan clay
Saturday Evening Girls' Club of
Paul Revere Pottery, Boston, 1908–42
Marks: *SEG* / *LMD* / 11-20
(PO-088-88)

Vase, 1911
Glazed white clay
Rookwood Pottery,
Cincinnati, 1880–1967
Decorator: Sara Sax,
1870–1949
Marks: [conjoined *RP*
surmounted by flames] /
XI / 589 *F* / *V* /
[conjoined *SAX*] /
GV / 1
(PO-013-66)



12) **Vase**, 1902–7
Sicardo line
Metallic-glazed white clay
S.A. Weller Pottery, Zanesville, Ohio,
1872–1949
Decorator: Jacques Sicard, 1865–1923
Marks on base: 29
Marks on side: *WELLER* / *SICARD*
(PO-047-69)

13) **Vase**, 1903–10
Glazed white clay
Pewabic Pottery, Detroit, 1903–61,
1968–present
Marks: [*PEWABIC DETROIT*]
(PO-022-71)

14) **Vase**, 1899
Glazed white clay with
metal overlay
(copper electroplated
with gold wash)
Rookwood Pottery,
Cincinnati, 1880–1967
Decorator: Harriet
Elizabeth Wilcox,
1869–1943
Marks: [conjoined *RP*
surmounted by flames] /
879 *B* / *H.E.W.* /
Garden of [Eden]
(PO-006-92)



15) *Left to right:*

Vase, 1914
Glazed white clay
Rookwood Pottery, Cincinnati,
1880–1967
Decorator: Edward George Diers,
1870–1947
Marks: [conjoined *RP* surmounted
by flames] / *XIV* / *V* / 89 /
[conjoined *ED*]
(PO-036-76)

Vase, 1918

Glazed clay
Rookwood Pottery, Cincinnati,
1880–1967
Decorator: Frederick Daniel Henry
Rothenbusch, active at Rookwood
1896–1931
Marks: [conjoined *RP* surmounted
by flames] / *XVIII* / ·2060 /
[conjoined *FR*] / 1571
Gift of Herbert O. and Susan C.
Robinson
(PO-049-86)

Vase, 1913

Glazed white clay
Rookwood Pottery,
Cincinnati, 1880–1967
Decorator: Sara Sax,
1870–1949
Marks: [conjoined *RP*
surmounted by flames] /
XIII / 1065*B* / *V* / *V* /
[conjoined *SAX*]
Gift of Herbert O. and Susan C.
Robinson
(PO-033-82)



16) Landscape plaques

Glazed white clay
Rookwood Pottery, Cincinnati,
1880–1967

Top row, left to right:

***A Florida River* in original frame, c. 1915**

Decorator: Lenore Asbury, 1866–1933
Signed, lower right: *L.A.*
Marks: [conjoined *RP* surmounted
by flames] / *XV* / *V* / *A Florida River* /
9 3/8 x 14 3/4 / *384 - 3"* - *290* / *50* / *X*
Paper label: [conjoined *RP*
surmounted by flames]
Paper label: *A Florida River* / *L. Asbury*
(PO-002-79)

***Misty Morn* in original frame, c. 1913**

Decorator: Edward George Diers,
1870–1947
Signed, lower right: *E. Diers*
Marks: [conjoined *RP* surmounted
by flames] / *XIII* / *v* / ... / *40 -* /
384 - 3 - 2.30 / *8 1/2 x 10 3/4*
Paper label: [conjoined *RP*
surmounted by flames]
Paper label: “*MISTY MORN*” /
E. DIERS
(PO-019-71)

Middle row, left to right:

***Sunny Tropics* in original frame, c. 1913**

Decorator: Lenore Asbury, 1866–1933
Signed, lower left: *L.A.*
Marks: [conjoined *RP* surmounted
by flames] / *XIII* / *V* / ... / *60 -* /
Sunny Tropics / *384 -3"* *290* /
9 3/8 x 14 3/8
Paper label: [conjoined *RP* surmounted
by flames]
Paper label: *Sunny Tropics* / *L. Asbury*
(PO-001-79)

***Birches* in original frame,
c. 1927**

Decorator: Edward
George Diers, 1870–1947
Marks: [conjoined *RP*
surmounted by flames] /
XXVII / · /
87- 1" as lining /
768- 1"- 350 / *4 x 8* /
4 x 8 / *25*
Paper label: [conjoined
RP surmounted by flames]
Paper label: *Birches* and
The [illegible] / *E. Diers*
Gift of Herbert O. and Susan C.
Robinson
(PO-073-86)



**Untitled landscape in original frame,
c. 1915**

Decorator: Charles (Carl) Schmidt,
1875–1959
Signed, lower right: *C. Schmidt*
Marks: [conjoined *RP* surmounted by
flames] / *XV* / *V* /
370 -2 1/2" · *190* / *15 -* / *cut out rabbit*
to / *cover edge*
(PO-020-71)

Bottom row, left to right:

Untitled landscape, 1927

Decorator: Frederick
Daniel Henry
Rothenbusch, active at
Rookwood, 1896–1931
Signed, lower right:
[conjoined *FR*]
Marks: [conjoined *RP* surmounted
by flames] / *XXVII* · / *100- /*
9 x 14 1/2 / *170- 3/4* as lining /
+668 - 3" - *outside -* / *700* /
9 1/4 x 14 1/2 R
Gift of Randall M. and Annie R. Moore
(PO-035-82)



***Storm Clouds: Holland* in original frame,
c. 1914**

Decorator: Edward Timothy Hurley,
1869–1950
Signed, lower left: [conjoined *ETH*]
Marks: [*RP* conjoined surmounted
by flames] / *XIV* / *V* /.../ *Storm Clouds:*
Holland / *1027 - 2 1/2 -200 x* /
5 7/8 x 7 3/4
Paper label: [conjoined *RP* surmounted
by flames]
Paper label: [illegible]
(PO-005-65)

17) Left to right:

Vase, 1899

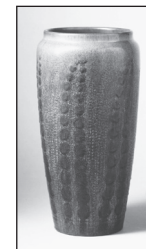
Glazed red clay with applied
electroformed copper
Rookwood Pottery, Cincinnati,
1880–1967
Designer: Kataro Shirayamadani,
1865–1948
Marks: [conjoined *RP* surmounted
by flames] / *764C* / [Japanese characters
for Kataro Shirayamadani]
Gift of Charles Sherman
(PO-073-87)

Vase, 1898

Goldstone glaze line with some
Tiger Eye glaze
Glazed red clay
Rookwood Pottery, Cincinnati,
1880–1967
Designer: William Watts Taylor, 1847–1913
Decorator: Artus Van Briggie, 1869–1904
Marks: [conjoined *RP* surmounted
by flames] / *745 B* / [conjoined *AVB*]
(PO-015-94)

18) Vase, 1927

Glazed white clay
Rookwood Pottery,
Cincinnati, 1880–1967
Decorator: William E.
Hentschel, 1892–1962
Marks: [conjoined *RP*
surmounted by flames] /
XXVII / *1369 B* /
[conjoined *WEH*]
(PO-018-68)



19) Left to right:

Vase, 1882

Glazed white clay
Rookwood Pottery,
Cincinnati, 1880–1967
Decorator: Maria
Longworth
Nichols, 1849–1932
Marks: *ROOKWOOD* /
1882 / *102* / [*MLN*]
(PO-017-68)



Vase, 1892

Glazed white clay with silver overlay
Rookwood Pottery, Cincinnati,
1880–1967

Decorator: Sara Alice Toohey, 1872–1941

Marks: [conjoined *RP* surmounted
by flames] / 640 / *W* /
[conjoined *ST*] / 1892 /
GORHAM MFG. CO. / *R 491*
(PO-010-67)

20) Left to right:

Vase, c. 1916

Glazed white clay
Rookwood Pottery,
Cincinnati, 1880–1967
Designer: Kataro
Shirayamadani, 1865–1948
Marks: [conjoined *RP*
surmounted by flames] /
IV / *II B Z V* /
[Japanese characters for
Kataro Shirayamadani]
(PO-055-68)



Vase, 1904

Glazed white clay
Rookwood Pottery, Cincinnati,
1880–1967
Decorator: Edward Timothy Hurley,
1869–1950
Marks: [conjoined *RP* surmounted
by flames] / *IV* / 328 / *D* / *Z* /
[inverted *V*] / [conjoined *ETH*]
(PO-044-68)

21) Vase, 1903

Black Iris glaze line
Glazed white clay
Rookwood Pottery,
Cincinnati, 1880–1967
Decorator: Charles (Carl)
Schmidt, 1875–1959
Marks: [conjoined *RP*
surmounted by flames] /
III / 904 / *B* / *W* /
[conjoined *CS*]
(PO-005-92)



THE CHARLES HOSMER
MORSE MUSEUM
of American Art

445 NORTH PARK AVENUE, WINTER PARK, FLORIDA 32789
407-645-5311 WWW.MORSEMUSEUM.ORG